

**Speaker**

**Model: OSS42-40-14A2.0W8-W**



**ELECTRICAL SPECIFICATIONS**

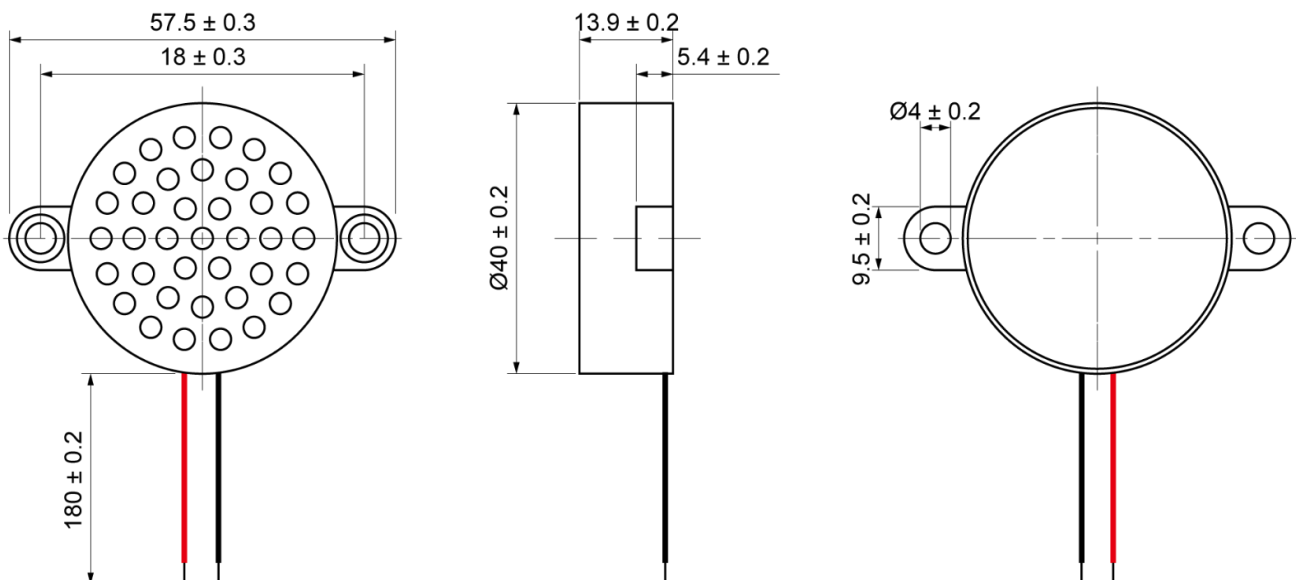
	Condition	Parameter	Unit
Sound Pressure Level	at 0.1W, 0.1M [at 0.8, 1.0, 1.5, 2.0KHz]	94 ± 3	dB
Impedance	at 1V, 1000Hz	8 ± 15%	Ω
Rated Input Power		2	W
Max Input Power		3	W
Resonant Frequency (Fo)	at 1V	1000 ± 20%	Hz
Frequency Range		F0 ~ 6000	Hz
Buzzer & Rattles	not be audible at sine wave between F0 ~ 10KHz	4	V
Operating Temperature		-20 ~ 50	°C
Magnet		Nd-Fe-B	
Frame Material		Plastic	
Cone Material		PET	
Weight		5	g

**MECHANICAL DRAWING**

Dimensions in mm

Wire: 180mm, UL1571, AWG#28

Tolerance ±0.5mm Except Specified



**Speaker**

**Model: OSS42-40-14A2.0W8-W**

**FREQUENCY RESPONSE CURVE**

**频响曲线**

